



ALCO INC. HEAD OFFICE

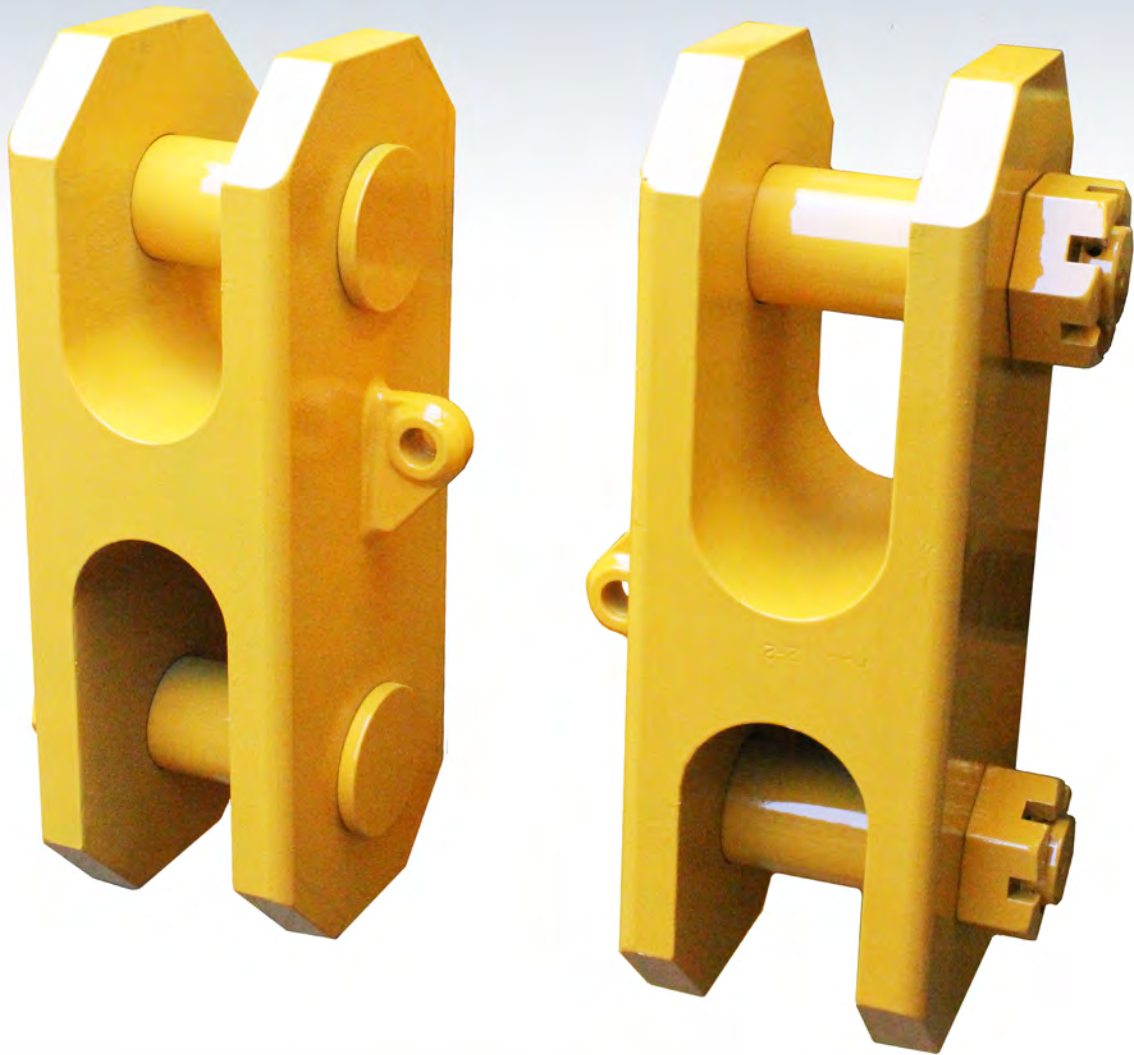
6925 - 104 Street, Edmonton

Alberta, Canada T6H 2L5

BUS: (780) 435-3502

TOLL FREE: 1-800-563-1498

www.alcoinc.ca



ALCO Elevator Link Connectors



Reg. No. Q1 - 2406



License No.
8C - 0271



**QMS
REGISTERED**

ISO 9001:2008
Reg. No. 2532





ALCO Elevator Link Connectors

Description

- Engineering design to API Spec 8C
- Manufactured and Certified in North America to API Spec 8C PSL 1 SR2 (-40°)
- One of the most complete offerings in the industry for length and tonnage

Features / Benefits

- Threaded pin/nut with secondary retention
- 150-Ton sets are available in solid body style
- 250-Ton and 350-Ton sets are available in plate design style
- Manufactured from North American supplied plate
- All sets come with API Certification
- Custom lengths and ratings can be designed and manufactured in as little as 4 weeks

Specifications

- Manufactured to API Spec 8C PSL 1 SR2 (-40°)
- Load rating from 150-Ton (133,446 daN) to 350-Ton (311,375 daN)

Solid Body

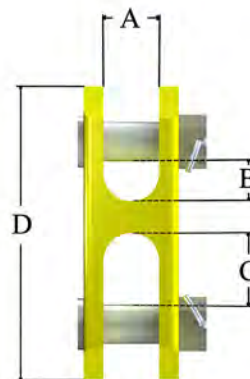
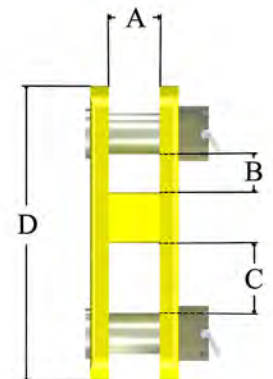


Plate Design



Product Sizing				
Load Rating	A	B	C	D
150-Ton/(133,446 daN)	3.5''/(88.9 mm)	2.5''/(63.5 mm)	4.5''/(114.3 mm)	18.5''/(469.9 mm)
250-Ton/(222,411 daN)	4''/(101.6 mm)	3''/(76.2 mm)	5.5''/(139.7 mm)	23.25''/(590.55 mm)
350-Ton/(311,375 daN)	4.5''/(114.3 mm)	3.5''/(88.9 mm)	6.5''/(165.1 mm)	25.25''/(641.35 mm)

Get Started at: sales@alcoinc.ca